

TS-217

UNIVERSAL LAUNCHER TEST SET

- Intermediate-Level testing of AMRAAM Launchers (LAU-127, LAU-128, & LAU-129), Maverick Launchers (LAU-117 & LAU-88), Sidewinder Launchers (LAU-7), and Paveway Kits
- Depot-Level testing of AMRAAM, Maverick, and Sidewinder launchers and Paveway subassemblies and circuit cards
- Depot-Level testing of all F-18 armament assemblies and subassemblies including launchers, racks, and pylons
- Full parametric test with troubleshooting
- Built-in-test, self-test, and automated calibration

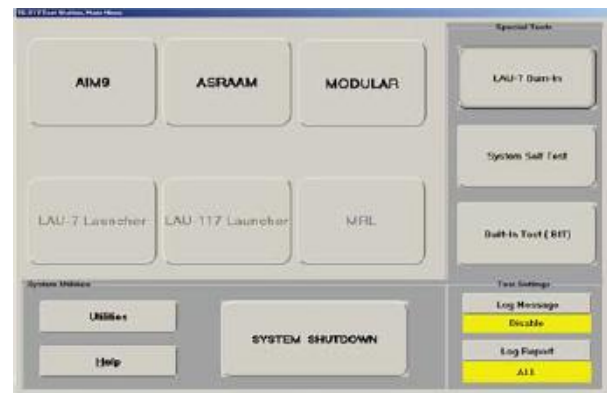


DESCRIPTION

The TS-217 is an I-level and Depot-level Universal Launcher test set supporting fighter aircraft launchers including the LAU-127, LAU-128, and LAU-129 (AMRAAM), LAU-117 and LAU-88 (Maverick), and LAU-7 (Sidewinder) missile launchers, launcher electronic assemblies, launcher power supplies, and circuit cards. The TS-217 is also used as a depot-level tester for F-18 armament including launchers (LAU-127, LAU-7, LAU-115, and LAU-116), bomb racks (BRU-32), and aircraft pylons (SUU-62 and SUU-63). Additionally, the TS-217 supports MAU-169 Paveway kits, subassemblies, and circuit cards. The TS-217 performs full parametric functional testing as well as troubleshooting to the faulty LRU (I-Level configuration) and SRU (Depot-Level configuration). The TS-217 can be used as an I-Level tester or as a Depot / Acceptance tester for launcher subassemblies.

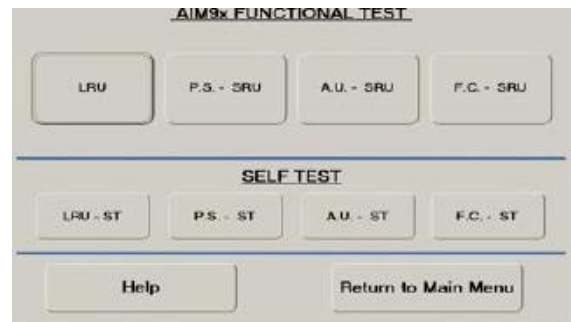
FEATURES

The design of the TS-217 is based on the PXI technology. PXI, PCI eXtensions for Instrumentation, is now being specified by most military and commercial customers as the platform of choice for field, intermediate, and depot test equipment due to its rugged construction, high performance, and cost-effectiveness. The TS-217 also employs GPIB instruments for power and audio functions.



LAU-7 Power Supply Selection Screen

The TS-217 utilizes an advanced ATEasy test executive. Full touch screen menu-driven control eliminates operator's errors or the need for a keyboard or a mouse. From the Main Menu, the user has easy access to setup, testing, and utilities.

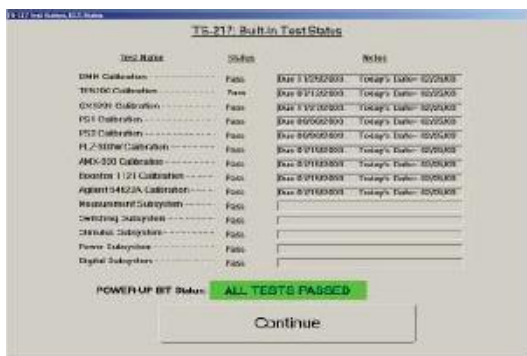


AIM-9X Test Menu

TS-217

BIT AND SELF-TEST

The TS-217 includes a Power-Up BIT that performs a health check on all subsystems and verifies calibration validity on power-up. An extensive self-test program verifies that test set hardware is operational and meets the specifications using a Self-Test Adapter. An automated calibration procedure employs a calibration adapter to minimize calibration down-time and ensure tester accuracy.



Power-Up BIT Screen

DATA COLLECTION

During testing, the TS-217 collects all test data and stores it in a test log. The test log contains general information such as date, time, operator's name, UUT part numbers, software version, and actual test data, limits (tolerances), and descriptions of all tests. Test data is saved automatically and can be used later for trend analysis and/or printed at the end of the test.



Test Log View Screen

COMPATIBILITY AND FUTURE GROWTH

As a universal mixed signal test set, the TS-217 can be upgraded to test additional launchers or armament products. It also offers optional support for MIL-STD-1760 munitions and can also include a WMUX-194 interface to support testing of F-16 Stores Management System (SMS) assemblies.

TS-217

SPECIFICATIONS

UUT SUPPORT	
Maverick Launchers	LAU-117A V(2) LAU-117A V(3) LAU-88A/A
Maverick Launchers Subassemblies	LAU-117A V(2) LEA LAU-117A V(2) CCAs (A1 through A6) LAU-117A V(3) LEA LAU-117A V(3) CCAs (A1 through A6) LAU-88A/A circuit cards (A1 through A11 & A22)
AMRAAM Launchers	LAU-127, LAU-128, LAU-129
AMRAAM Launchers Subassemblies	MRL Power Supply Audio Switching Unit (ASU) Power Switching Unit (PSU) MRL BIT Assembly
Sidewinder Launchers	LAU-7 Aero3-B 16s210
Sidewinder Launchers Subassemblies	LAU-7 Modular Power Supply ASRAAM Power Supply AIM-9X Power Supplies Fire control Assy of AIM-9 Power supplies Audio Assy of AIM-9 Power supplies Power Assy of AIM-9 Power supplies
Other Launchers	LAU-115 LAU-116
Pylons and Bomb Racks	SUU-62 Pylon SUU-63 Pylon BRU-32 MAU-12
Paveway Kits and Subassemblies	MAU-169 A/B MAU-169 B/B MAU-169 D/B MAU-169 Detector Assy MAU-169 CCAs
ELECTRICAL AND MECHANICAL	
Interfaces	RS-232, RS-422, USB, Ethernet
Display	Rack-mounted LCD xVGA Touch Screen, 19"
Control	Touch screen Keyboard, mouse (not required)
Input Power	200 VAC, 3-phase, 50 / 60 Hz

ENVIRONMENTAL

Operating Temperature	+10 °C to +40 °C
Storage Temperature	-10 °C to +71 °C
Relative Humidity (Non-Condensing)	90%
Altitude	30,000 ft
EMI / RFI	IAW MIL-PRF-28800E
Size	2-bay 19" station with an optional workbench

Note: Specifications are subject to change without notice

ORDERING INFORMATION

TS-217	Universal Launcher Test Set
ACCESSORY	
TS-217-TPS	Contact Factory for Model Numbers and Availability

TS-217

THIS PAGE INTENTIONALLY LEFT BLANK